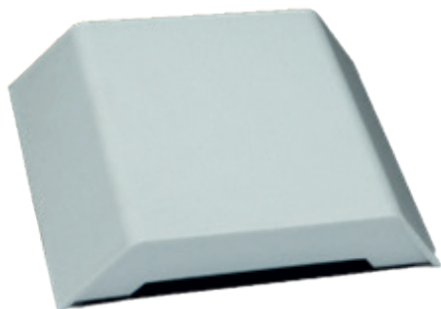


Wireless linkable smoke alarm coordinator QR-NA24V



SAVE THESE INSTRUCTIONS FOR FUTURE REFERENCE!

This manual contains important information for the correct installation and use of the product. Please read this information carefully and retain the instruction for future reference.

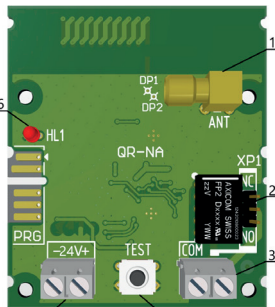
QR-NA24V coordinator to establish a connection between a network of ASD-10QR smoke alarms and an external device, powered by 24V such as a fire- or intruder control panel.

BASIC FUNCTIONS

- Compatible with most free passage door closers
- Connection to the doorcloser through a dry contact
- Creates a wireless network with up to 23 smoke alarms
- One button operation for all modes
- Compact size
- Self-healing feature
- LED indication
- Ability to amplify the signal through an antenna
- Made in Europe

SPECIFICATIONS

Input voltage: 20V to 30V
 RF frequency: 868.100 (<1% duty cycle)
 RF power: +14 dBm max
 RF range: Up to 120 m. open space
 With external antenna: Up to 300 m. open space
 NO / NC contact: with active load: 1A/30VDC; 0.3A/125VAC
 Max. switching power: 30W (1A/30VDC), 37.5VA (0.3A/125VAC)
 Operating temperature: 0°C to + 55°C



1. Antenna connector (ANT)
2. Selection of NO/NC (normally open/normally closed) contact XP1
3. NO/NC contact (COM)
4. Test button (TEST)
5. Power supply terminal (24V)
6. Mode LED indication (HL1)

Caution! Never touch the PCB without using an antistatic wrist strap or antistatic gloves. By doing so you can damage the product due to electrostatic discharge.

CONNECTION PROCEDURE

Connect the QR-NA24V to the alarm control panel and power it. Upon successful joining, the QR-NA24V enters Standby mode, which is indicated by one blink of the LED indicator every 3-4 seconds. When powered and correctly connected, upon receiving an event signal from one of the smoke alarms in the network, the QR-NA24V switches to "Fire" mode. The LED indicator blinks every 1 second. Depending on the type and requirements of the control panel, the coordinator allows connection through a normally open (NO) or normally closed (NC) contact.

PROCEDURE OF JOINING THE QR-NA24V TO A SECURITY EXCHANGE:

- jumper XP1 (fig. 1, pos. 2) sets the use of a normally open (NO) or normally closed (NC) contact
- via the COM terminal (fig. 1, item 3) a free area of the control unit is connected
- via the 24V terminal (fig. 1, item 5) the supply voltage from the central unit with a nominal value of 24V is connected, observing the polarity

ATTENTION!

With a normally closed contact, if the wires are interchanged when connecting to the COM terminal and the 24V terminal, it is possible to damage the security unit's power supply.

SELF-RECOVERY MODE

Resetting the "Fire" mode and switching back to the Standby mode (disengaging the relay) takes place in the following situations:

- After 16 seconds without receiving an alarm signal
- By pressing the TEST button (fig. 1, pos. 4) for more than 2 seconds

PROCEDURE FOR CREATING OR JOINING THE NETWORK:

METHOD 1; Used when creating a new network

1. Press continuously the TEST button on the QR-NA24V for more than 4 seconds, until the LED indicator lights up continuously
2. Remove all smoke alarms that will be part of the network from their base. On each of them, press the TEST button briefly once. In case of successful execution of this step, the LED indicators of the Coordinator and the connected smoke alarms will flash in sync
3. To terminate the joining mode, it is necessary to briefly press the TEST button of the QR-NA24V.

METHOD 2; Used when a network already exists

1. Press the TEST button shortly 5 times on the QR-NA24V. The QR-NA24V enters the network connection mode for a period of 120 seconds. During this time the LED indicator blinks 1 long and 1 short blink every 2-3 seconds.
2. Remove one of the connected smoke alarms from the bottom plate and shortly press its test button. In doing so, the QR-NA24V accepts the existing network code and returns to Standby mode. It blinks the red LED to confirm this.
3. Turn the smoke alarm back on the bottom plate and test the operation

Note: If it is necessary to forcefully exit the joining mode, briefly press the TEST button of the QR-NA24V-24V coordinator.

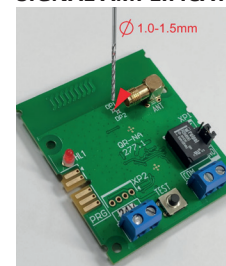
TESTING THE OPERATION OF THE CIRCUIT FROM THE CONTROL PANEL

1. Press the TEST button shortly 7 times. The QR-NA24V goes into alarm mode for a period of 120 seconds
2. Alarm mode is reset by pressing and the TEST button for 2 seconds

DISCONNECTING THE QR-NA24V FROM THE NETWORK:

1. Press the TEST button 10 times on the QR-NA24V while connected to the network.
2. The power to the QR-NA24V is turned off. After 3-4 seconds the power is restored
3. Press and hold the TEST button for more than 4 seconds until the LED indicator lights continuously (mode for creating a network).
4. Press the TEST button briefly to finalize the procedure.

SIGNAL AMPLIFICATION



Installing the QR-NA24V in a switchboard located in a metal box creates a prerequisite for signal interference between the QR-NA24V and the smoke alarms. In this case, it is recommended to strengthen the signal by connecting an external antenna. The antenna needs to be connected to the QR-NA24V via an RP SMA Male to RP SMA. Before using the external antenna, it is necessary to disconnect the internal antenna. To do this, you need to drill a hole on the PCB at the DP1 point with a drill with a diameter of 1.0-1.5 mm, as shown in the photo.

ANTENNA SPECIFICATIONS:

Impedance: 50 OHM
 Frequency Range: 868MHZ
 Gain: 3 - 6dbi
 SWR: ≤ 1.5
 Connector: SMA male

ATTENTION! The manufacturer is not responsible for disconnection or product performance degradation due to RF interference.

OPERATING PRECAUTIONS:

Parameter	Rating	Standard
ESD-Human Body Model (HBM)	Class 1A	ESDA/JEDEC JS-001-201
ESD-Changed Device Model (CDM)	Class C1	JEDEC JESD22-C101F
MSL-Moisture Sensitivity level	Level 3	IPC/JEDEC J-STD-020



Attention!
ESD-sensitive device

LED modes:

Mode:	LED
Standby mode	
Alarm mode	
Mode Network Connection Method 1	
Mode Network Connection Method 2	

PRODUCT WARRANTY

If installed, used and maintained properly, the manufacturer guarantees this product, against material and/or manufacturing faults for a period of 5 years from the original date of purchase by the consumer. Exceptions include damage arising from accidents or misuse. If the product becomes defective within the stated period, then it will be repaired or replaced free of charge. Please do not attempt to repair the product yourself or tinker with it, which will invalidate the warranty.

INSTRUCTIONS FOR REMOVAL

Do not dispose of the QR-NA24V in the bin, but rather hand it in to a local collection point for small, domestic waste.



Supplier:

Fito Products B.V.
 De Langkamp 12a
 3961 MS Wijk bij Duurstede
 The Netherlands
 www.fito.eu